

# FRITZ HANSEN



EGG™  
PRODUCT FACT SHEET

## EGG™

The Egg™ chair by Arne Jacobsen is an everlasting Danish design masterpiece. Like a sculptor, Jacobsen strived to shape the shell's perfect form by experimenting with wire and plaster in his garage. Today, it is recognised worldwide as one of the triumphs of Jacobsen's legendary career and a monumental achievement in Scandinavian craftsmanship.

**PRODUCT TYPE**

Lounge chair

**ENVIRONMENT**

Indoor

**DESIGNER / YEAR OF DESIGN**

Arne Jacobsen, 1958

**ABOUT THE DESIGNER**

The collaboration between Arne Jacobsen and Fritz Hansen dates back to 1934. It was not until 1952 however that the team got its breakthrough with the Ant™. It was succeeded by Series 7™ in 1955, thereby enabling both Jacobsen and Fritz Hansen to write their names into furniture history.

**MODELS**

3316: Lounge chair

3127: Footstool

**MATERIAL**

**Shell:** The shell is molded CombiPUR (RigiPur/hard PUR and FlexiPUR soft PUR), and back is covered with tricot wadding 100g, before the chair is upholstered with fabric or leather. The shell of the lounge chair has an adjustable tilt fitting which can be adjusted to the weight of the individual user.

**Base:** The star-shaped, swivel base consists either of a satin chromed steel tube connected to a base in satin polished aluminium or a powder coated steel tube connected to a base in powder coated aluminium. The base of the footstool is made of satin polished or powder coated aluminium. The footstool is without swivel function. The leg ferrules are made in black polyamide.

**Materials in %:**

3316 (leather):	3316 (textile):
Aluminium: 7%	Aluminium: 8%
Leather: 26%	Textile: 21%
Steel: 25%	Steel: 26%
PUR foam: 42%	PUR foam: 45%

3127 (leather):	3127 (textile)
Aluminium: 29%	Aluminium: 30%
Leather: 15%	Textile: 11%
Steel: 26%	Steel: 27%
PUR foam: 29%	PUR foam: 30%
Plastic: 1%	Plastic: 1%

**FEATURES**

- Automatic return (3316)
- Felt glides

**COLOURS**

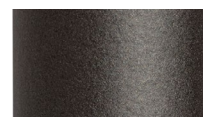
The base is available in 5 variants:



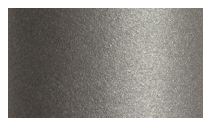
ALUMINIUM



BLACK (190)



WARM GRAPHITE (180)



SILVER GREY (170)



BROWN BRONZE (390)

**UPHOLSTERY**

The Egg™ is available in the following selection of textile and leather types:

**Textile:** Christianshavn™, Canvas, Capture, Comfort, Diablo, Divina, Divina Melange, Divina MD, Fame, Fiord, Hallingdal, Remix, Re-wool, Rime, Steelcut, Steelcut Trio, Sunniva, Tonus.

**Leather:** Essential, Aura, Embrace, Essential, Grace, Natural, Rustik.

**MADE-TO-ORDER**

Non-standard configurations (special colours, upholstery etc.) are available upon request at a minimum order quantity.

**PRODUCTION PROCESS**

**Lounge chair:** The shell of the Egg is made of polyurethane foam with glass fibre reinforcement. The foam for the upholstery and the seat cushion is molded directly onto the hard PUR shell. The tilt mechanism is made of sheet metal, steel tubing and spring steel. The adjustment handle is of polished or powder coated drawn stainless steel. The base consists of a satinpolished or powder coated swivel centre part of welded steel tubing (dia. 38 × 2 mm), a spindle of dia. 28 mm machining steel and a 4-star base in injection moulded aluminium.

**Footstool:** The shell of the footstool is made of synthetic material, the foam for the upholstery is molded directly onto the hard PUR shell. The base is made from a swivel centre part of welded steel tubing mounted on a 4-star base in satin polished or powder coated aluminium.

**CERTIFICATION**

- The Egg™ is GreenGuard Gold certified

For more information about environment and manufacturing processes, please download our environmental information sheet at: [fritzhanzen.com](http://fritzhanzen.com)

**TEST**

- EN 15373 (EN 1728) Test Level 2 General Contract use for strenght and durability

**WEIGHT****3316:**

Textile: 19,8 kg / 43.7 lb

Leather: 21,2 kg / 46.7 lb

**3127:**

Textile: 4,6 kg / 10.1 lb

Leather: 4,8 kg / 10.6 lb

**COUNTRY OF ORIGIN**

Poland

**PRE-ASSEMBLED**

Yes

**PACKAGING**

The chair/footstool is covered with a recycled plastic bag and shipped in a recycled cardboard box. All packaging material can be recycled.

**CLEANING AND CARE**

Find recommendations for cleaning and care at: [fritzhanzen.com/maintenance](http://fritzhanzen.com/maintenance)

**REPAIR, DISPOSAL AND REUSE**

In the case of disposal the chair and footstool can be disassembled into two parts (shell and base). The shell of the chair requires special handling because of the embedded steel frame. The base and all other metal parts can be recycled. Check local regulations for recycling and whether there is potential for reuse.

**WARRANTY**

Fritz Hansen provides a five-year warranty on standard products against defects in materials and workmanship. An extended warranty of up to twenty years is provided on selected products provided they have been registered online on [fritzhanzen.com/my-fh](http://fritzhanzen.com/my-fh).

Standard: 5 years (Lacquer on base, Tilt, Swivel, Automatic return, Fabric, Leather: Essential)

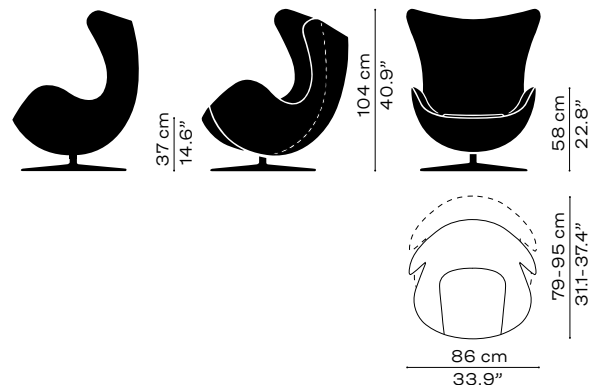
Extended: 10 years (Base, Shell, Leather: Aura, Rustik, Natural, Grace, Embrace)

On any material, fabric or leather, which is not listed in our price list on a specific product, the standard warranty is 2 years.

Additional warranty conditions can be found at: [fritzhanzen.com/warranty](http://fritzhanzen.com/warranty)

**SPARE PARTS**

A range of spare parts can be found on: [fritzhanzen.com/en/Categories/Products/Spareparts](http://fritzhanzen.com/en/Categories/Products/Spareparts)

**DIMENSIONS****3316****3127**